

FREQUENTLY ASKED QUESTIONS

What is Broad Sky's SkyLink Enterprise service powered by WildBlue?

WildBlue is the first broadband Internet service provider to offer a commercial service using Ka-band spot beam satellite technology that dramatically lowers the cost of high speed Internet via satellite.

How fast is the service?

Broad Sky offers its WildBlue Enterprise Solutions broadband Internet service at download speeds of up to 1.5Mbps and upload speeds of up to 256Kbps.

What is the difference between Broad Sky's SkyLink Enterprise Solutions business class plans and WildBlue consumer plans?

Business customers demand the highest levels of product performance and customer service. WildBlue Enterprise Solutions service plans are optimized for the business customer. With extensive experience and knowledge about your industry, Broad Sky offers network design, enterprise installation management, customer service and other value-added services expected from business customers.

How do I purchase WildBlue Enterprise Solutions for my business?


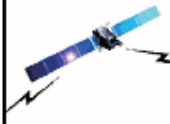
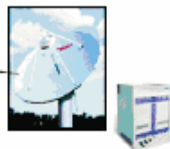

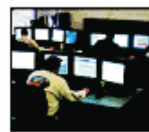
Broad Sky is an Authorized VAR offering WildBlue's Enterprise equipment and high speed Internet service to enterprise customers. Broad Sky handles the sales, installation and customer care of your SkyLink service powered by WildBlue. Please contact Broad Sky at Sales@BroadSkyNetworks.net or www.BroadSkyNetworks.net/SkyLink. Enterprises with 5 or more sites must work with an Authorized WildBlue VAR.

Who installs my new SkyLink service powered by WildBlue Enterprise?

Broad Sky handles the sales, installation and customer care of your WildBlue service. Broad Sky can also provide additional installation services at the time of our satellite install.

When is satellite-provided Internet connectivity not the best choice?

Satellite-delivered Internet may not be your best choice in situations involving high latency-sensitive applications. For example, certain VPN technologies are not compatible with satellite acceleration technologies. There are solutions such as SSL-based VPN and accelerated IP Sec VPN provide by End II End that works over the WildBlue satellite network.

Subscriber Terminal	Ka-band Satellites	Gateway Earth Stations	Internet Connectivity	NOC and OSS/BSS
				
Terrestrial Standards High Volume Silicon Low Cost Architecture	Simple Bent Pipe High Frequency Reuse Spot Beams	Terrestrial Standards Simple, Low Cost Design Unmanned	Leased Infrastructure Off-the-shelf Technology	Enterprise Class Use of DOCSIS Standard

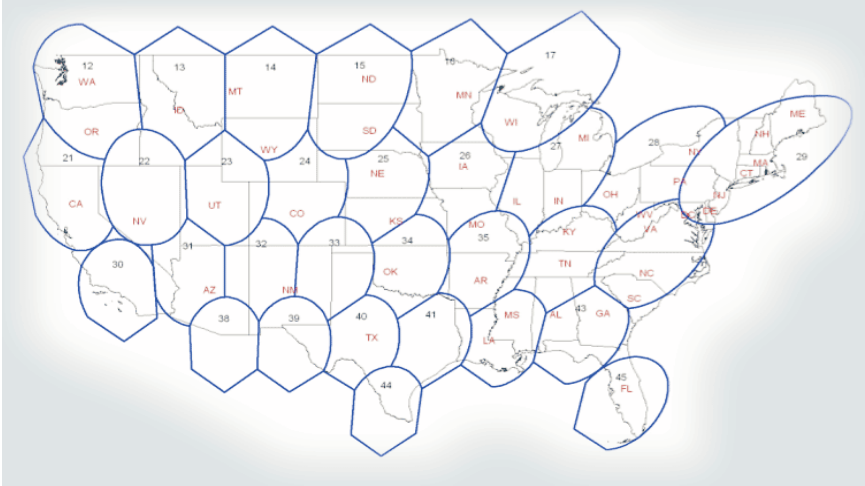


Broad Sky Networks

**BROAD SKY OFFERS
ENTERPRISE CLASS HIGH SPEED,
TWO-WAY WIRELESS
SATELLITE-DELIVERED
PRODUCTS AND SERVICES
TO BUSINESS CUSTOMERS**



BROAD SKY'S SKYLINK COVERAGE MAP



WHY SKYLINK POWERED BY WILDBLUE ENTERPRISE SOLUTIONS?

Affordable – Broad Sky's SkyLink service offers the best value to its clients that can benefit from WildBlue service by delivering broadband Internet services at low monthly prices, and a low up-front cost for equipment and installation.

Fast - SkyLink provides faster speeds for the business critical applications you need to run your business backed with Business Class Service Level Agreements.

Flexible/Scalable SkyLink allows you to select the service plan to fits your unique business needs. You can also increase or decrease your speeds using the same equipment as your business adds more bandwidth intensive applications or users at each site. "Future Proofing" your initial investment.

National, Single Provider - SkyLink provides broadband service to virtually any business location in the continental US by a single provider with a large, certified, professional installation network nationwide.

Features SkyLink	64	500	1000	1500	1500plus
Download Speed (up to)	64Kbps	512Kbps	1Mbps	1.5Mbps	1.5Mbps
Upload Speed (up to)	64Kbps	128Kbps	200Kbps	256Kbps	256Kbps
Static IP Address	Up to 5	Up to 5	Up to 5	Up to 5	Up to 5
On-site Maintenance	Nationwide	Nationwide	Nationwide	Nationwide	Nationwide
24/7 Customer Service	Included	Included	Included	Included	Included
Professional Installation	Nationwide	Nationwide	Nationwide	Nationwide	Nationwide
Total FAP*	1,500MB	15,000MB	21,000MB	30,000MB	48,000MB

* Fair Access Policy. Figure refers to total up and down monthly usage thresholds.

BROAD SKY'S SKYLINK SERVICE POWERED BY WILDBLUE ENTERPRISE

Next Generation Technology for the Business Customer

WildBlue is the first commercial service provider to dramatically lower the cost of high-speed Internet via satellite using Ka-band spot beam satellite technology.

The Best Price-to-Performance Ratio in the Satellite Industry

Broad Sky offer our SkyLink service powered by WildBlue Enterprise Solutions at download speeds of up to 1.5Mbps and upload speeds of up to 256Kbps at prices significantly lower than currently available in the Enterprise market. Higher uploads to 512K available in latter half of 2006 with new larger dish.

Low Up-front Investment in Equipment and Installation

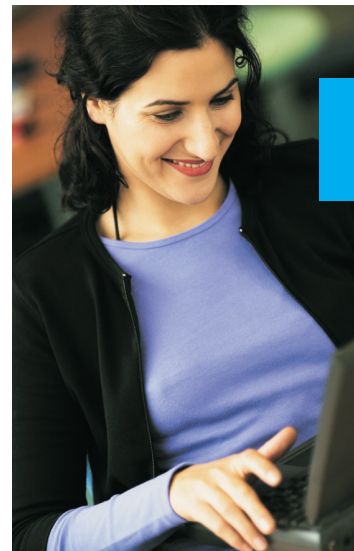
Broad Sky's SkyLink service powered by WildBlue Enterprise Solutions offers the lowest cost equipment by leveraging the proven cable modem networking standard DOCSIS (Data Over Cable Service Interface Specification). WildBlue has developed a platform that lowers the cost of consumer terminals, reduces satellite bandwidth requirements, enables easy customer provisioning, and provides reliable customer service and network support tools.

An Enterprise-Class, Nationwide Installation Network

With Broad Sky you get a professional, enterprise class nationwide installer network which allows you to quickly connect your business locations across the continental U.S. and securely connect them over the public Internet.

Putting the "Value" Back in "Value-Added Resellers"

Broad Sky has developed a network of nationwide Master Agents and Value-Added Resellers (VARs) to offer the Broad Sky SkyLink service. With extensive experience and knowledge about your industry, Broad Sky's Master Agents, VAR's and Dealers handle the sales, while Broad installation and customer care of your WildBlue service with the quality expected by Enterprise customers.



MARKET SEGMENTS SERVICED BY BROAD SKY INCLUDE:

- Small and Medium Enterprises (SMEs)
- Telecommuters
- Industries, such as Retail, Financial, Telemedicine, Education
- Energy
- Remote Monitoring or SCADA
- Federal, State and Local Government Agencies
- Disaster Recovery and Homeland Security
- Retail and Quick Service Restaurants